

**AS Level Biology A**  
**H020/02** Depth in biology

**Question Set 1**

1. Fig. 1.1 shows a student's diagrams of two plant cells. Each cell was observed using a different type of microscope. The cells are not drawn to scale.

(a)

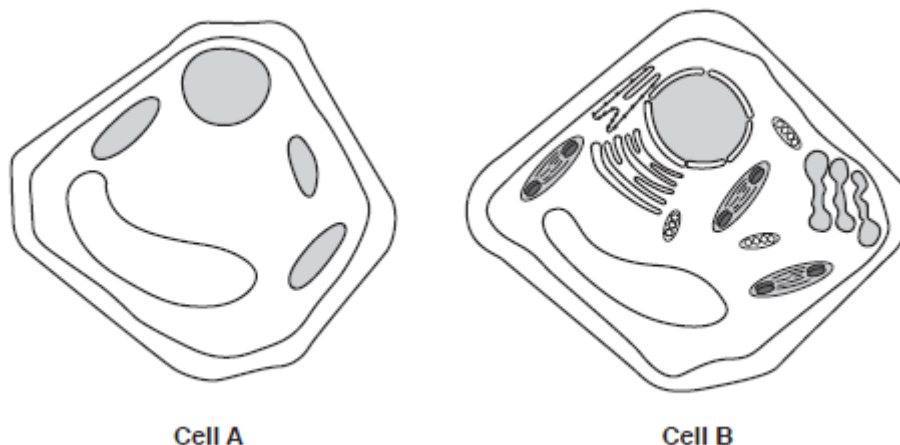


Fig 1.1

(i) Cell B in Fig. 1.1 was observed using an electron microscope. Give one piece of evidence from Fig. 1.1 that supports this.

[1]

**Mitochondria can be observed.**

(ii) Give one way that an image produced by a laser scanning confocal microscope differs from that produced by an electron microscope.

[1]

**Image produced by laser scanning confocal microscope has a lower resolution than image produced by electron microscope.**

(b) Meiosis is a type of nuclear division.

Fig. 1.2 shows a photomicrograph of plant cells undergoing meiosis.

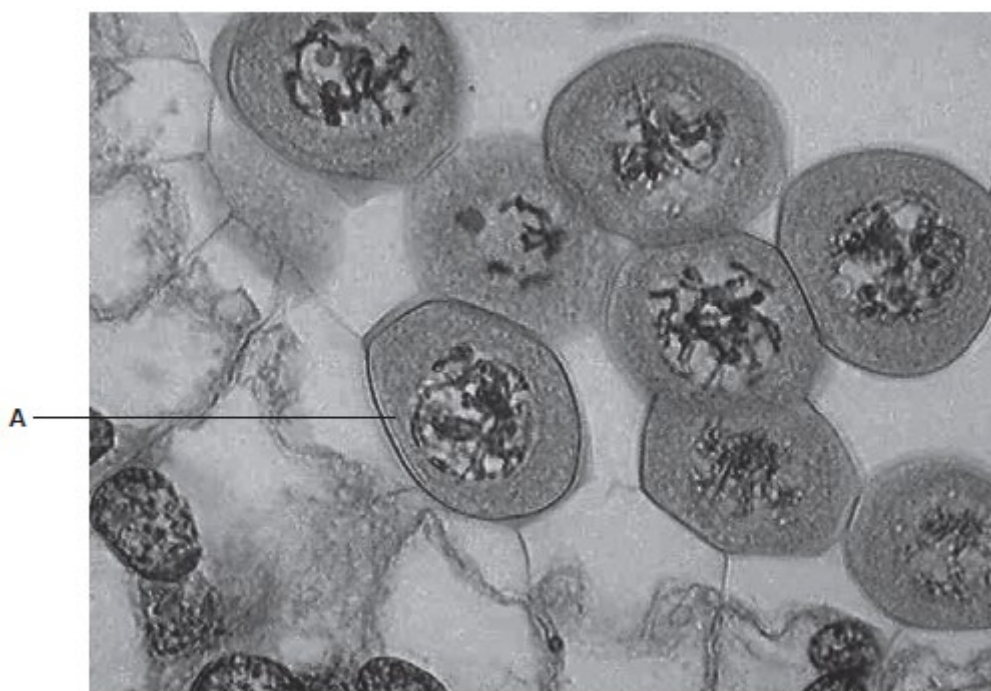


Fig. 1.2

(i) Identify the stage of meiosis 1 shown in the cell labelled **A**. **Prophase I** [1]

(ii) Based only on your observations of Fig.1.2, state **two** reasons for your answer in (b)(i). [2]

**Chromosomes condensed and visible**  
**Nucleolus is not visible.**

(iii) Another stage of meiosis is metaphase 1.

Explain how the organisation of homologous chromosomes during metaphase [3]

1 increases genetic variation.

**During metaphase I, homologous chromosomes line up along the equator. The chromosomes are positioned randomly so that the maternal or paternal chromosomes may face either cell pole. This leads to independent assortment during anaphase I which increases genetic variation.**

(c) The use of stem cells is being evaluated for the treatment of certain human diseases.

Name **two** potential sources of human stem cells and for **one** source, describe an ethical issue associated with the use of stem cells. [4]

**Pluripotent stem cells removed from embryos grown in vitro. Following this, the embryo is destroyed. This is seen as immoral and equivalent to murder by some individuals.**

**Multipotent adult stem cells collected from bone marrow.**

**Total Marks for Question Set 1: 12**

---

# OCR

Oxford Cambridge and RSA

## **Copyright Information**

OCR is committed to seeking permission to reproduce all third-party content that it uses in its assessment materials. OCR has attempted to identify and contact all copyright holders whose work is used in this paper. To avoid the issue of disclosure of answer-related information to candidates, all copyright acknowledgements are reproduced in the OCR Copyright Acknowledgements Booklet. This is produced for each series of examinations and is freely available to download from our public website ([www.ocr.org.uk](http://www.ocr.org.uk)) after the live examination series.

If OCR has unwittingly failed to correctly acknowledge or clear any third-party content in this assessment material, OCR will be happy to correct its mistake at the earliest possible opportunity.

For queries or further information please contact The OCR Copyright Team, The Triangle Building, Shaftesbury Road, Cambridge CB2 8EA.

OCR is part of the Cambridge Assessment Group; Cambridge Assessment is the brand name of University of Cambridge Local Examinations Syndicate (UCLES), which is itself a department of the University of Cambridge